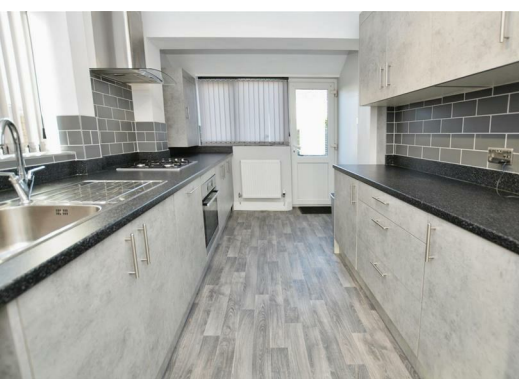





**269 Grange Lane South, Scunthorpe  
DN16 3NL  
£925 Per Month**

Available to let we have this three bedroom detached home, located in the Ashby area of Scunthorpe. The property briefly comprises of an entrance hall, downstairs W/C, living room/dining and kitchen on the ground floor. On the first floor can be found all three bedrooms and three piece bathroom. The property benefits from off road parking to the front of the property and a lawned garden to the rear. Located a short distance from Frederick Gough School and Ashby High Street, this home is extremely well positioned in a popular area.

All tenancies are available on an initial 6 months short-term agreement, with the option to continue on a monthly periodic basis thereafter.



Energy Efficiency Rating		
	Current	Potential
Very energy efficient - lower running costs		
(92 plus) <b>A</b>		
(81-91) <b>B</b>		
(69-80) <b>C</b>		
(55-68) <b>D</b>		
(39-54) <b>E</b>		
(21-38) <b>F</b>		
(1-20) <b>G</b>		
Not energy efficient - higher running costs		
England & Wales		EU Directive 2002/91/EC 

Environmental Impact (CO <sub>2</sub> ) Rating		
	Current	Potential
Very environmentally friendly - lower CO2 emissions		
(92 plus) <b>A</b>		
(81-91) <b>B</b>		
(69-80) <b>C</b>		
(55-68) <b>D</b>		
(39-54) <b>E</b>		
(21-38) <b>F</b>		
(1-20) <b>G</b>		
Not environmentally friendly - higher CO2 emissions		
England & Wales		EU Directive 2002/91/EC 